

Redcliffe A H & I Society Inc.
www.redcliffeshow.com

73rd ANNUAL REDCLIFFE SHOW

24, 25 & 26 June 2022



NEEDLEWORK SCHEDULE

Section 7

NEEDLEWORK

SECTION 7

HEAD STEWARDS

Barbara Mapp

Mobile 0411 501 153

Email: bmapp@optusnet.com.au

Julie Taeffe-Hill

Mobile 0419 362 069

Email: jtaeffehill@gmail.com

STEWARDS

Karlene Lewis

Diane Johnston

Cheryl Salisbury

Elizabeth Harkess

Sue Snowdon

Deborrah Lord

Kate Farthing

Joanne Frawley

Sue Hood

Jan Welch

Jennifer Burgess

SHOW SECRETARY

Mrs V. McIntyre

PO Box 39, REDCLIFFE Qld 4020

Phone: (07) 3284 5387

Email: info@redcliffeshow.org.au

Website: www.redcliffeshow.com

CHAMPION TROPHY

*Donated by Nathan Corscadden, in memory of his Great Grandmother
Mary Corscadden*

RESERVE CHAMPION TROPHY

Donated by Salisbury Family 1871 Pioneers

HAND EMBROIDERY PERPETUAL TROPHY

In memory of Roslyn Rogers and Meg Rogers

AWARDS FOR MOST OUTSTANDING

Lace

Knitting

Hand Embroidery

Dolls and Toys

Textile Art

Crochet

Fibre Crafts

Sewing

Miniature Articles

Millinery

SECTION 7 - Conditions of Entry/Regulations

1. Applications to Enter: Entry Forms must be lodged with the Show Secretary, PO Box 39, Redcliffe Qld, 4020, prior to **Friday 3 June, 2022**. Late entries will not be accepted. Entry Forms are available on the Redcliffe Show Website: *www.redcliffeshow.com*

2. Entry Form: A full description (colour, pattern, size) including the Category and Class of each entry is to be completed on the Entry Form to assist Stewards, particularly when returning exhibits.

3. Entry Fees:

Entry Fees are **\$2.00 per entry** for Classes 1 - 59 and Classes 62 - 64. Junior Section Classes 60 - 61 are Free.

Entry fees can be posted with Entry Forms or paid for when delivering entries on Sunday 12 June, 2022.

4. Prizes: Prizes may be cash, gift voucher, trophy or gift.

Classes 1-64 —First Place \$15.00; 2nd Place \$5.00 OR trophy/voucher of equal/higher value. Prizes for Champion, Reserve Champion and Most Outstanding range in value from \$30.00 to \$150.00 (cash , gift voucher or prize)

Prize winners names will be released after 9am Friday 24 June, 2022.

Unclaimed prizes will be regarded as lapsed and all monies will become a donation to the Redcliffe Show Society if not collected within 3 months of show ending.

5. Delivery of Exhibits: Exhibits may be posted or delivered in person.

Exhibits may be posted to the Redcliffe Show Society (Att: Head Steward Needlework) PO Box 39 Redcliffe QLD 4020, to be received by to **Friday, 10 June 2022**.

Stewards will be in attendance at the Showgrounds (Needlework Pavilion) to accept exhibits on **Sunday 12 June, 2022** from **1.00pm to 5.00pm**.

6. Collection of Exhibits:

Exhibits may be collected from the Needlework Pavilion on Monday 27 June, 2022 between 9.00am and 12 noon. No entries will be returned prior to these times. If you are unable to collect exhibits during these times, pre-paid postage must be organised by the exhibitor prior to entering.

7. Judging:

Judge's decisions are final and prizes are awarded at the judge's discretion.

If there is a minimum of **three (3)** entries in a class, rewarding of prizes will be at the Judge's discretion.

Exhibits **can not** be entered in two (2) classes.

Framed exhibits must not exceed 70cm x 70cm.

Articles must be completed within the last 12 months.

Washed or worn exhibits will be disqualified.

Stewards reserve the right to disqualify or transfer any exhibits entered in the wrong class, or combine or split classes where necessary.

All care will be taken with Exhibits, however the Society will not be responsible for any loss or damage to exhibits.

8. Sale of Exhibits:

Exhibits may be sold at the Show. Please put a "size" (where applicable) and "price" on articles of clothing or other items which may be sold.

9. COVID Rules

Please adhere to any COVID safety principles that apply to the Redcliffe Showgrounds and the Redcliffe Show.

10. Pavilion Opening Hours

Friday:	24 June 2022	Open 8.30am	Close 8.00pm
Saturday:	25 June 2022	Open 8.30am	Close 8.00pm
Sunday:	26 June 2022	Open 8.30am	Close 3pm

CLASS SECTIONS

Category A. Lace - any type of lace

Tatting, Bobbin, Crocheted, Knitted, Needle, Etc.

CLASS

1. Handkerchief - edge or edge & corner
2. Table centre - any lace work
3. Crocheted lace - any article
eg. Coffee cloth, Tray cloth, Table mat
4. Tatting - any article
5. Knitted Lace - any article
6. Motif picture - unframed any type of lace
7. Any Article of Any Lace work not specified
eg. Bobbin, Needle, Knotted, Tape, Etc.
8. Article of lace work made by Exhibitor who is a novice or never won a prize in Lace at the Redcliffe show

Category B. Crochet

CLASS

9. Crocheted Baby Garment
eg. Bonnet, Booties, Dress, Matinee jacket
10. Crocheted Child's Garment
11. Crocheted Adult's Garment
12. Crocheted Rug
eg. Bedspread, Knee rug, Baby blanket
13. Any Other Article of Crochet not specified
eg. Socks, Beanies, Freeform
14. Article of Crochet made by Exhibitor who is a novice or never won a prize in Crochet, at the Redcliffe show

Category C - Knitting

CLASS

15. Hand Knitted Baby Garment
eg. Bonnet, Booties, Dress, Matinee jacket
16. Hand Knitted Child's Garment
17. Hand Knitted Adult's Garment
18. Hand Knitted Rug
eg. Bedspread, Knee rug, Baby blanket
19. Hand Knitted Set
20. Any Other Article of Knitting not specified
eg. Socks, Beanies, Freeform
21. Article of Knitting made by Exhibitor who is a novice or never won a prize in Knitting at the Redcliffe show

Category D - Fibre Crafts

CLASS

22. Hank of Pure Wool hand spun by Entrant
23. Hank of Fibre hand spun by Entrant
eg. Silk, Mohair, Alpaca or mixture of fibres.
24. Hank of Novelty Yarn hand spun by Entrant
25. Hank of Dyed Yarn - List Dying Process used
eg. Plant dyes, Commercial dyes, Household products.
26. Article made from Yarn hand spun by Entrant
eg. Crochet or Knitting
27. Article of Weaving
eg. Item, Clothing, Yardage for same

Category E - Hand Embroidery

Exhibits must not exceed 70cm x 70cm including frame

CLASS

28. Hand Embroidered Article - Unframed
e.g. Table centre/ Cloth, Tray cloth, Duchess set
29. Counted Cross Stitch - Framed
30. Counted Cross Stitch - Unframed
31. Canvas Work - any article
32. Candle wicking - any article
33. Any Other Embroidery not specified
34. Article of Embroidery made by Exhibitor who is a novice or never won a prize in Embroidery at the Redcliffe show

Category F - Sewing

CLASS

35. Child's Garment
36. Smocking - any article
37. Article of Quilting with Appliqué
38. Article of Quilting or Patchwork - small - under 1 metre
39. Article of Quilting or Patchwork - med - between 1m & 2m
40. Article of Quilting or Patchwork - large - over 2m
(Due to size, larger quilts may not be hung to display; they may be folded)
41. Any Other Article of Sewing not specified
42. Article of Sewing made by Exhibitor who is a novice or never won a prize in Sewing at the Redcliffe show

Category G - Dolls & Toys

CLASS

43. Commercial Porcelain Doll Dressed by Exhibitor (*Note: Clothing is to be made by Exhibitor*)
44. Hand-made Porcelain Doll and clothing made by Exhibitor
45. Dressed Doll - Sewing / Embroidery (*Note: Clothing is to be made by Exhibitor*)
46. Dressed Doll - Knitting / Crochet (*Note: Clothing is to be made by Exhibitor*)
47. Bear - any medium
48. Soft Doll or Toy – Sewing (material only)
49. Soft Doll or Toy - Knitting / Crochet
50. Contemporary Doll or Toy
51. Toy Family or Group - any medium
52. Doll or Toy made by Exhibitor who is a novice or never won a prize in Dolls & Toys at the Redcliffe show

Category H - Miniature / Small Article

Size must be under 16cm in any direction - height, length, depth.

CLASS

53. Xmas Decorations/Article - any medium
54. Novelty Pin Cushion - any medium
55. Any Other Miniature not specified

Category I. Textile Art

CLASS

56. Textile Article - any medium

Category J - Restricted

57. **Open to entrants over 75 or nursing home residents who have not entered in any other section of Needlework Schedule**
Lace, Crochet, Weaving, Sewing, Embroidery, Knitting - any article.

58. **Open to entrants over 85 or nursing home residents who have not entered in any other section of Needlework Schedule**
Lace, Crochet, Weaving, Sewing, Embroidery, Knitting - any article
59. **Open to entrants with a disability who have not entered in any other section of Needlework Schedule**
Lace, Crochet, Weaving, Sewing, Embroidery, Knitting - any article

Category K - Junior (Entry free)

CLASS

60. **Under the age of 14 years**
Lace, Crochet, Weaving, Sewing, Embroidery, Knitting - any article

CLASS

61. **14 years to 18 years**
Lace, Crochet, Weaving, Sewing, Embroidery, Knitting - any article

Category L - Recycled

CLASS

62. Article made from recycled material using needlework skills
e.g. Crochet, knitting, weaving, embroidery, sewing

Category M - Millinery

CLASS

63. Millinery Australia Beginners/Novice: Create a headpiece, headband or cocktail style hat or fascinator for evening or bridal.
64. Millinery Australia Designer Headwear: Create headwear not exceeding 30cm in width. Hand block and design headwear suitable for a Spring Racing Carnival bearing in mind the trims and colours with imaginative Style.

SPONSORS FOR 2022

The Redcliffe Show would like to thank the following sponsors for their valued support.

MAJOR SPONSORS

**HARCOURTS UNITE—MARGATE
PETER WATSON'S REDCLIFFE PEST CONTROL
SERVICE
CLONTARF HOT BREAD
FLOORS ARE US
AMBERLEI CATERING
CLEAVERS FIREARMS
BERNINA SEWING CENTRE CHERMSIDE
MARGATE BEACH POST OFFICE
COSY COUCH YARN STORE
MILLINERY ASSOCIATION OF AUSTRALIA
KIDMANS HAIR STUDIO**

SPONSORS

**NATHAN CORSCADDEN: IN MEMORY OF HIS GREAT
GRANDMOTHER , MARY CORSCADDEN
JEROME ASHBORN: IN MEMORY OF HIS MOTHER, NONETA
SALISBURY FAMILY 1871 PIONEERS
QUEENSLAND COUNTRY WOMEN'S ASSOCIATION
REDCLIFFE SPINNERS, WEAVERS AND DYERS
HENZELL STREET QUILTERS
ASHFORD SPINNING WHEELS & LOOMS - LINDY BOSHLE
REDCLIFFE DISTRICT ORCHID SOCIETY
KARLENE LEWIS
BRADLEY STEWART**

Please acknowledge our Sponsors by supporting their local business!

Harcourts Unite

Harcourts Unite

A: 260 Oxley Ave, Margate

P: 3924 1222

E: tara.hawley@harcourts.com.au

W: www.unite.harcourts.com.au



**REDCLIFFE
PEST CONTROL SERVICES**
CONTACT PETER J WATSON
35 YRS EXTERMINATING PESTS

**QBSA CONTRACTOR
LIC 736235
TERMITE SPECIALIST
PH/32844940
MOB /0417709603
STATE HEALTH
DEPARTMENT LIC
1254**

Peter Watson's Pest Control Service

A: 22 Centaur St, Redcliffe

P: 3284 4940

M: 0417 709 603



Bernina Sewing Centre Chermside

A: Shop 12—725 Gympie Rd,
Chermside

P: 3359 5255

E: contact@berninachermside.com.au

W: www.berninachermside.com.au

AMBERLEI CATERING



LEAH BRANDER

MOBILE: 0422 735 625 1bra7904@bigpond.net.au

Amberlei Catering

M: 0422 735 625

E: 1bra7904@bigpond.net.au



Cleaver Firearms

A: 27 Beaconsfield St, Margate

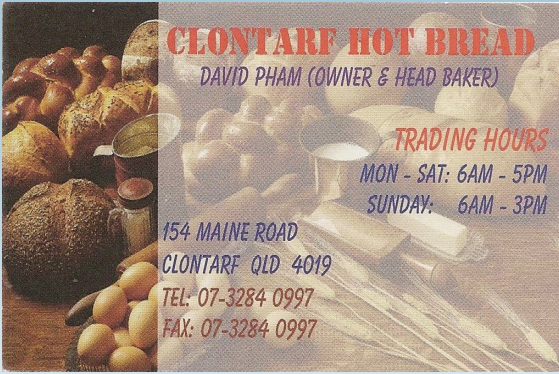
P: 3883 1733

M: 0419 644 269

E: sales@cleaverfirearms.com

W: www.cleaverfirearms.com

Please acknowledge our Sponsors by supporting their local business!



Clontarf Hot Bread

A: 154 Maine Rd, Clontarf

P: 3284 0997

W: www.clontarf-hot-bread.business.site

MARGATE BEACH POST OFFICE

Andrew and Linda Costanzo

Phone: 3284 2868



Margate Beach Post Office

A: Shop 5 266 Oxley Ave, Margate Beach

P: 3284 2868



Floors Are Us

A: 10 Weston St, Zillmere

E: Jason@floorsandingrus.com.au

M: 0419 651 746



Cosy Couch Yarn Store

A: Shop 9 116 Sutton St, Redcliffe

Ph: 0421 417 451



Kidmans Hair Studios

A: Shop 1 147 Sutton St, Redcliffe

P: 3283 3001



Millinery Association of Australia

E: info@millineraustralia.org

W: www.millineryaustralia.org